

Malvern Town Council

Grants Scheme 2020/21



Malvern Town Council provides grants twice a year to local groups and organisations.

Groups are asked to provide Malvern Town Council with written evidence of how the money has been spent and the benefit it has brought to the people of Malvern within twelve months of the grant being awarded. The reports that follow are for grants awarded in the 2020/21 financial year.

OCTOBER 2020

In October 2020, the Town Council grant scheme awarded small grants totalling £1690 and large grants totalling £4848.76 to the following local organisations.

Small grants	7th Malvern Company Girls Brigade	£500.00
	1st Malvern Company Boys Brigade	£500.00
	St Mary's, Pickersleigh	£500.00
	Malvern Community Forest	£190.00
	Total	£1690.00

Large grants	The Chase High School	£2,348.76
	Perfect Circle Theatre Company	£2,500.00
	Total	£4848.76

Items 1 and 2: Coats and sweatshirts for the company:

GB coats and sweatshirts have been purchased and are used at every band event that the GB participates in (the band is joint with the Boys Brigade). The sweatshirts are also worn by the girls each week to GB sessions which helps to promote a sense of belonging and community. Since purchasing the coats and sweatshirts, they have been worn at multiple parades including the Remembrance Parade which took place in Malvern this year. This was led by our joint band made up of members from the Boys and Girls Brigade. In addition, the coats and sweatshirts were worn for the bi-annual band parade where, this year, the company toured around the UK playing in both Manchester and Blackpool. This gives the members of the GB an opportunity to meet other young people and the experience of playing their instrument in a mass band. The members of the GB who attend always speak positively of this experience. This year was particularly important as post-lockdown the girls had the experience to visit other places and bond with each other developing their friendships. We usually perform at other events throughout the year including supporting the local Scout group at the St George's Day parade, The Armed Forces Day Parade and church parades which involves parading around Great Malvern.

Items 3 and 4: tent repairs and replacement tent poles and pegs:

Tent repairs are essential as the tents are used for girls participating in the Duke of Edinburgh Award Scheme. Due to COVID, we have previously been limited in facilitating this. This year we have girls participating in their Bronze and Gold. We are planning to take the girls training at Clun which usually takes place over the May bank holiday. During this time, the girls refresh their map and compass work and use this time as their practice before the final expedition on their own. The tents are carried, put up and used by the girls undertaking their DoE. The tents are essential part of the expedition and by making repairs we can extend the life of the tent which ensures that all the girls who wish to take part in DoE can.

Item 5: Spare equipment for cycling linked to the DofE

To support the girls wishing to undertake the cycling DoE we need to help provide other equipment which ensures their safety such as puncture repair kits, helmets, and pannier bags to hold the equipment. We help provide this equipment to ensure that all girls are given the opportunity to take part in DoE. DoE helps girls to develop problem solving skills, resilience and builds qualities which develops them as community members.

Item 6: Annual cycle servicing (£130 per bike)

Again, the bicycles are used for the DoE and to ensure the safety of our members they need to be serviced each year. This is undertaken by a local bike shop and are taken by a member of the Boys Brigade company to be serviced each year. During May 2021, we had planned to undertake a practice but unfortunately, due to COVID this had to be cancelled. We are hoping that they can be used this year and as they are serviced, are safe and ready for use.

We would like to thank Malvern Council for this grant as it allows us to continue to support the girls in our company.

GB officers

1ST MALVERN BOYS BRIGADE - SMALL GRANT £500

“We have used the gazebo twice as we get back to larger events. We used it outside the hall for our display in the summer to allow us to greet the parents outside. As a result we had a membership enquiry. We also used it at our five a side football competition in Tewksbury.”



ST MARY'S PICKERSLEIGH - SMALL GRANT £500

“The grant was used to purchase toys and new equipment for the Pickersleigh Bears preschool group. Pickersleigh Bears provides a space for preschoolers to play, to interact socially with other preschoolers, to join in singing, listen to a story and enjoy a healthy snack that includes two portions of fruit. The group meets weekly on a Thursday morning during school term-time.

The group also provides a chance for parents and carers to meet each other, widening their own support networks and hopefully reducing the sense of social isolation that new parents can sometimes feel.

Since we submitted our grant application in 2020, 49 children and 45 adults have attended Pickersleigh Bears, representing 40 families from Malvern. Covid restrictions in late 2020 limited our numbers to 15 adults per week, whilst the restrictions imposed by the January-May 2021 lockdown prevented the group from operating at all. This meant that slightly fewer families attended over the past twelve months than would have otherwise been the case compared to previous years.

If any of the Town Councillors would like to visit Pickersleigh Bears to see the group in operation, then if they make an appointment with me, I would be happy to host their visit.

Yours sincerely,

Revd Lynne Sparkes, Vicar and Chair of Trustees, St Mary's Pickersleigh



7 Arosa Drive
Malvern
WR14 3JP
treasurer@malverncommunityforest.org.uk

12 January 2022

Report to Malvern Town Council

This is a report on how Malvern Community Forest used the £190 grant from Malvern Town Council. This grant was part of Malvern Town Council's Small Grants Scheme 2020.

The grant enabled us to purchase saplings to continue the work of creating hedges at Malvern Link Station. The hedges not only improve the appearance of the station but are also beneficial to wildlife and biodiversity. These improvements benefit the people of Malvern

The hedges are on the north half of the Worcester bound platform.

The saplings purchased included:

- Crab Apple
- Hazel
- Hawthorne
- Wild cherry
- Bird cherry

The work done Malvern Community Forest in addition to the actual planning included digging out a trench to replace rubble with quality soil ready for plating.

Malvern Community Forest will continue to look after the hedges and when they are large enough, we plan to layer them in a traditional way.



Malvern Community Forest thanks Malvern Town Council for their support.

Ian Caldwell
Treasurer and Trustee
Malvern Community Forest

Malvern Community Forest is a registered charity, number 1142997

THE CHASE SCHOOL - LARGE GRANT £2348.76



"I am pleased to inform you that the project has been completed. The grant from Malvern Town Council was fully utilised. We would like to pass on our thanks to Malvern Town Council for their support, it is hugely appreciated. As per the application form, the funds were used to purchase twenty physical pump sets and two wooden balance benches. These have already been used during PE lessons and we have included two photos for you. When social distancing measures are relaxed/

removed, the school is aiming to include these across specific groups/ after school activities.

PERFECT CIRCLE THEATRE COMPANY LARGE GRANT £2500

"Thanks to your grant support, we have 2 groups of young people exploring theatre making, writing, and performance. We have 27 young people across 2 groups working hard at Malvern Cube, including lots of people joining Perfect Circle Youth Theatre for the first time. Based on the skills developed this term, I am hoping some of the group will write a play for us to produce in the next year - I have certainly seen some brilliant examples of creative thinking and understanding, and the group is gaining in confidence as the term progresses. There have obviously been a few bumps in the road with covid regulations, but we are filming some of the work so that it can be shared.

We invited the youth theatre group from Worcester Theatres who shared some of the show they'd been working on, so we did have an excellent evening of new writing and performance work. The group (and I!) learned a lot about narrative, character, and structure, and we are keen to explore this work further with our upcoming projects. Three of the group are currently writing plays for performance next Spring term, which is a fantastic legacy of your kind support. We're also planning another sharing with youth theatre groups from Worcester next summer. So lots of successes, despite not being able to invite a wider audience.

Thanks again for your invaluable grant funding, it's very much appreciated. We don't receive any core funding, so each project that is supported by local councils or councillors allows us to explore new aspects of our work, invite guest practitioners to help us with specific projects, or work with other groups and venues. It means that young people have a wide range of creative experiences, and allows them to expand their skills and share work with others. Each new project is developed in consultation with the group, we have a youth theatre committee who make decisions on productions, venues, and future ideas. So everything we do is very much led by young people.

Huge thanks again for your support,

Perfect Circle Theatre Company

MARCH 2021

In March 2021, the Town Council grant scheme awarded small grants totalling £1500 and large grants totalling £9600 to the following local organisations.

Small grants	Lyttelton Well	£500
	Malvern Civic Society	£500
	St Richards Hospice	£500
	Total	£1500

Large grants	Friends of the Chase	£2,500
	Malvern Special Families	£2,000
	What Makes You Different Makes You Beautiful	£2,100
	Malvern Spa Association	£500
	Coach House Theatre	£2,500
	Total	£9,600

LYTTTELTON WELL – SMALL GRANT £500

The Well Counselling
Well

grant was to fund research into and testing of an online administrative system to improve the efficiency and communications of the service, which had been almost wholly paper-based up to that point.

We are happy to say that one of our volunteer counsellors with the required technical expertise conducted this research and testing during the period from the issuance of the grant until the end of June and invoiced us for her time at a rate of £20/hour for 25 hours of work. This work included:

- consultation with all stakeholders, including counsellors and the Trustees of the charity;
- ensuring functionality for our purposes;
- ensuring high levels of security to allow confidentiality in line with GDPR requirements and best practice in information handling;
- ensuring value for money for the charity; and
- distribution of status reports and recommendations.

As a result of this research and testing, we have subsequently and successfully integrated the Cliniko practice management software as the primary administrative tool for The Well Counselling.

The Well Counselling benefits the people of Malvern through the provision of affordable counselling, allowing anyone to obtain the help they need whatever their financial situation. This research into

online systems has allowed us to streamline the administration of clients and their paperwork; and reduced paper copies of client information. This has efficiency savings in terms of both time and money, as well as improving data security.

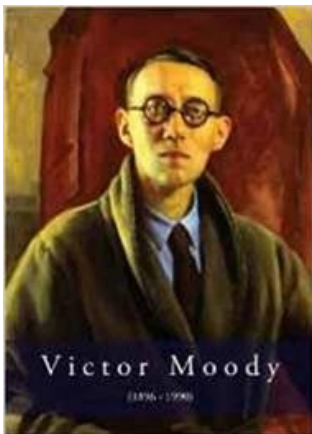
MALVERN CIVIC SOCIETY – SMALL GRANT £500



One of the significant events in Malvern this year was the proposed closure of the Malvern Hills College in Albert Road North. Not only was it the potential loss of an important building but the removal of a well-used and loved college with the result that students would have to travel to Pershore or Evesham for their courses.

The Society decided to support the campaign to retain the College by staging an exhibition of the work of Victor and Catherine Moody as part of Midsummer Malvern.

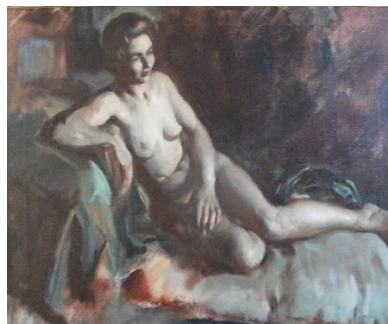
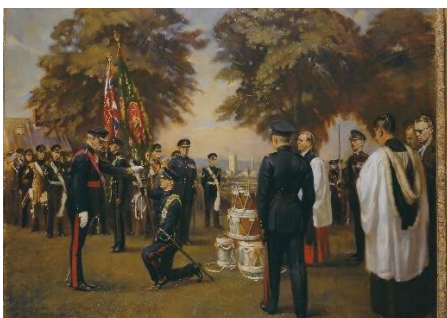
The Malvern College of Art flourished from the 1930s when Victor became its director, until 1990 when Catherine Moody retired; it followed the traditions of the Arts and Crafts Movement although the Moody style varied over the years.



Elmslie House was chosen as the venue for the Exhibition and a call went out to art galleries, dealers and private individuals who might have Moody pictures. The support was impressive, and we assembled over fifty works – many of them from local people who either knew the Moodys or had acquired works at the Serrell sale after Catherine's death. We were particularly pleased to have the support of the Price family who live in the Moody house in Sling Lane and who have carefully looked after the murals that decorate their hall and staircase.

All the phases of the work of Father and Daughter were represented in the Exhibition from many portraits – some of local residents like Louis Hamand, Priory Organist or famous visitors such as GBS - Victor's rustic phase, his corporate paintings of the Worcestershire Regiment and the Assembly Rooms plus some of Catherine's sculptures.

The Exhibition attracted widespread interest and, despite pandemic caution, hosted about five hundred people over the eight days. **Our thanks to Malvern Town Council for its essential financial support.**



ST RICHARD'S HOSPICE – SMALL GRANT £500

“St Richard’s Hospice applied for a grant towards the purchase of a Browsealoud Reachdeck toolbar which is an all-in-one digital inclusion solution and helps to ensure St Richard’s online content is accessible and usable to everyone, regardless of digital skills, physical abilities, literacy, language or cognitive challenges. We are extremely grateful to Malvern Town Council for the grant which enabled us to purchase the toolbar in March. Certainly it seems that the toolbar is being very well used and is a great way to increase accessibility for those who have difficulty using the internet.”

In the August, September and October, the services were accessed as follows:

Tool Bar	4542
Translate - translates web pages into 99 languages and can read aloud 40 of the most commonly used languages including Spanish and Chinese.	357
Text-to-speech - makes online services and information more accessible with a choice of read aloud voices, different reading speeds and highlighters to enhance understanding.	132
Web Page Simplifier - removes distracting content creating a simple format for online information – ideal for those with dyslexia, cognitive or learning disabilities.	6
Screen Masking - blocks online clutter, letting the user focus on the text they want to read.	5
PICTUREDICT	10
Text magnification	2
MP3 Creation - instantly converts online content into audio versions for easy offline listening.	2

FRIENDS OF THE CHASE – LARGE GRANT £2500



Friends of The Chase

Supporting our children and our school

Charity No. 518461

16 January 2022

Dear Malvern Town Councillors,

I am writing on behalf of the committee of Friends of The Chase to express our gratitude for the £2,500 you granted us last year to fund a third day of counselling for pupils at The Chase. We were able to fund this third day of counselling during the summer term (April through July 2021). This was part of wider project for which we have raised and granted £7,500 to The Chase to ensure that professional counselling is available for pupils who have found it difficult to cope with the pandemic, lockdowns, grief, family breakdown, disrupted learning and continuing uncertainty around GCSE and A-Level examinations.

Since September 2020 over 120 pupils have been referred to the school counsellor. Thanks to increased support for counselling, only a few children have had to spend time on the waiting list. This means most pupils got help as soon as they needed it and that they actually required less professional support (in the long run) than they might have required if they had had to wait months to see a counsellor.

Pupils who received counselling were asked to complete a brief questionnaire at the beginning and end of their course of counselling to document any changes they experienced in several areas. The results were overwhelmingly positive: 40% of pupils reported an improvement in confidence, 23% reported an improvement in health & well-being, 15% reported an improvement in academic performance, 5% reported an improvement in their own behaviour and an enormous 69% reported an improvement in their relationships with their teachers.

This last improvement is of particular interest. The School Counsellor has shared that counselling specifically helped pupils, who come from households where shouting is the norm, to understand that a teacher raising his or her voice in the classroom is not making a verbal attack on that student. She was able to help these pupils understand that it may actually be appropriate for a teacher to raise his or her voice when communicating instructions and maintaining good order in a classroom of 30 students. For some pupils this realisation was nothing short of revelatory and will help them negotiate learning and working environments more confidently for the rest of their lives.

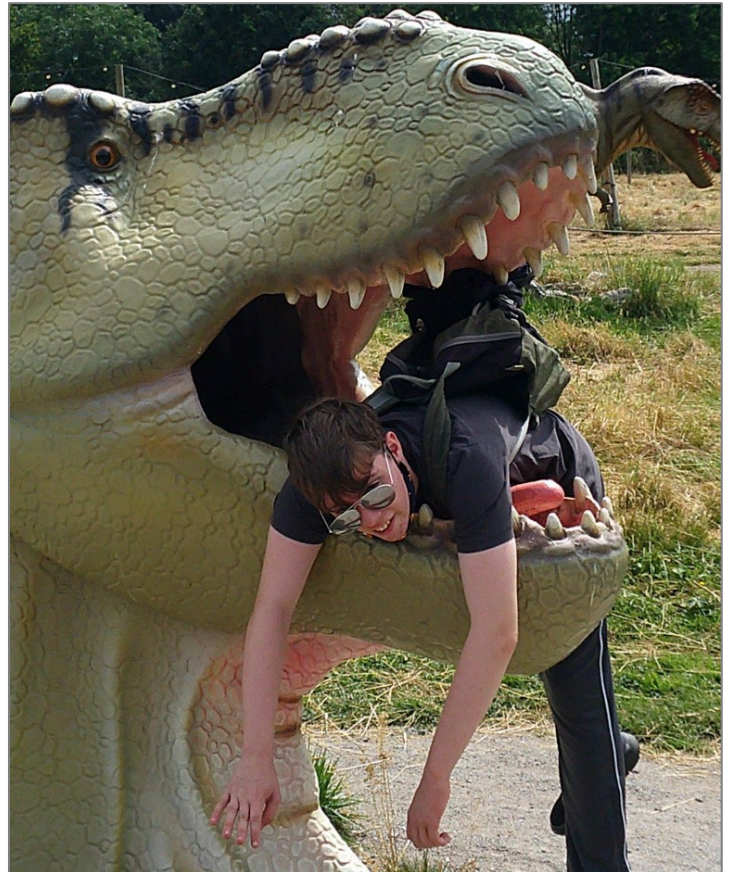
Sincerely,
Samantha Craig
Friends of The Chase

MALVERN SPECIAL FAMILIES – LARGE GRANT £2000

“Malvern Special Families were extremely lucky to receive a grant of £2,000 from Malvern Town Council to enable us to put on extra trips and activities for the children with special needs that we support. I am pleased to say the money helped us put on trips to West Midland Safari Park, Little Owl Farm Park, Dudley Zoo, Poppy’s farm and All things Wild. Over 60 children all with special needs aged from 5- 18 were able to access these trips. The trips were so important after many of our children had experienced the various lockdowns due to Covid – 19 with little or no access to outside spaces. These trips would not have been able to go ahead without the support of Malvern Town Council as all our face-to-face fundraising had been cancelled. The feedback from the children who went on the trips was overwhelmingly positive with many children saying it was their best day ever! The attached photos show what a good time was had by all. Many parents said they were so pleased that their children were finally able to get out and about once again and that they appreciated the break safe in the knowledge that the young people were safely enjoying themselves with Malvern Special Families.



On behalf of all the children that went on those trips I say a big thank you to Malvern Town Council.”





What we do and who we help

We are a special needs charity offering a wide range of projects and services that run from our Malvern Support Centre, across Worcestershire and the neighbouring counties. The charity provides a family-centred care approach, supporting parents, carers, friends, siblings and children with disabilities aged 0-19 years. Our main source of funding is the national lottery. With a clinical lead in place, WMYDMYB can facilitate face-to-face sessions for our service users, providing respite for both children

and their families. This is particularly important now more than ever.

The global outbreak of COVID-19 caused a huge shift in everyday life. It has been a particularly hard adjustment for children with additional needs and disabilities to cope with the amount of change and disruption. Extreme alterations to routines and a complete lack of life structure - experiencing closure of schools and nursery settings, social distancing and/or home confinement - have created a cocktail of struggles including increased stress, anxiety, and loss of confidence.

In March 2021, we received a grant of £2,100 from Malvern Town Council for our garden project.

What the funding was used for

The monies were used to revamp the garden, so that it was a safe and level area accessible to all. With restrictions on meeting indoors, the outside area has enabled us to carry on with sessions safely, let families meet up together and has hosted many coffee afternoons. It really has been a godsend. The children have had a wonderful summer and enjoyed water play and sprinklers, gardening and baking. It is a fun, vibrant, outdoor space for everyone, bringing the community together.



Thank you for supporting our small charity which helps over 400 families in the community.

MALVERN SPA ASSOCIATION – LARGE GRANT £500

In May 2021, the MSA (Malvern Spa Association) held a summer exhibition along Church Walk in Malvern. The aim was simple - a photo exhibition detailing Malvern's unique water heritage and geology within an easy to read narrative from its beginning to the present day. Using the allocated grant and our own funding, we were able to commission the highly regarded, local photographer, Jan Sedlacek, who took the extraordinarily creative images of the springs and wells in and around the Malvern hills. A map was available to download from the MSA's website allowing interested parties to visit the featured sites. The Committee felt that the exhibition was a great success in promoting the work of the MSA and educating the local public on this wonderful local resource. The commissioned images will be used in many ways: future exhibitions and shows, cards and calendars, point of sale and a future commemorative book.

COACH HOUSE THEATRE – LARGE GRANT £2500

The Coach House Theatre CARE scheme was designed to encourage performing arts individuals and companies together with visual artists and craftspeople to return to the theatre and gallery following the long period of enforced isolation caused by Covid precautions.

It was clear that many of the performers, artists and makers who had, in many cases, had little or no income could ill-afford to hire premises in which to resume their work. Similarly, although the Coach House Theatre Trustees were willing to commit funds to subsidise the hire fees it seemed desirable to make the stage and gallery spaces completely free of all costs and that this would require additional funding.

Applications were therefore made to several organisations, private and local authorities, to provide match funding in partnership with the Coach House Theatre. Two applications were successful – Malvern Town Council and The Elmley Foundation. Both provided £2500 which, together with an equal commitment by the Coach House Theatre, gave a total budget of £10,000.

Implementation

Information about the scheme was sent to an extensive list of potential users across a wide range of performance and visual artistic disciplines. Take-up from previous users of the Coach House Theatre has been excellent and many new contacts have been made that should result in future bookings both within the CARE scheme and paying the standard hire fees. The returning performers have also been able to re-establish their audience base and this should encourage them to book the theatre with confidence in the future. All those benefiting from the CARE scheme were required to acknowledge the assistance provided by the funders on all advertising material and programmes and, as far as possible, other print and broadcast media.

Outcomes

Performing arts – a total of sixteen groups and individuals performing everything from plays, teenage rock, comedy, drama classes for young people and classical music have taken advantage of the scheme so far. Education and other events have included TED talks, innovation lectures and local history subjects. The courtyard has even seen Morris Dancing!

Exhibitions – seven individuals and groups of local artists and craftspeople have displayed work in week-long events in the gallery. Similar events within the CARE scheme are planned for 2022.

Financial

As none of the users of the CARE scheme have had to pay venue hire charges they have retained all income from their events. This has proved to be a useful incentive to returning creatives and has

attracted new users. The cost in “lost” revenue to the Coach House Theatre is £7000. It is anticipated that the planned/booked events for 2022 will account for the remaining £3000 of the £10,000 budget.

The Future

There is clearly a need for an affordable, professionally equipped, performance space in the Malvern Hills area catering for small-scale and community activities that are not provided for in other, commercially operated local facilities. While it will not be possible to continue to operate a further “free” scheme, the Trustees of the Coach House Theatre are keen to continue to encourage potential users of the theatre by offering a subsidised fee system. We will therefore continue with our attempts to raise funds to assist users in 2022/23. If the Covid emergency continues, and especially if audience distancing becomes necessary again, such subsidies will be essential if the theatre is to remain viable.

Conclusions

1. The CARE scheme has achieved its aim of encouraging performers, artists and other users to return to the Coach House Theatre.
2. Local audiences have, once again, been able to enjoy the work of local practitioners.
3. The Coach House Theatre has reaffirmed its reputation for providing a friendly, professionally equipped and managed performing arts venue.
4. Without the generous aid provided by Malvern Town Council and The Elmley Foundation the CARE scheme would have been limited in its scope and outreach.

MALVERN TOWN COUNCIL SPECIAL GRANTS

POOLBROOK VILLAGE HALL - £2,000 FOR DISABLED TOILET FACILITIES JUNE 2019

MAGGS DAY CENTRE - £2,400 AWARDED OCTOBER 2019

Maggs Day Centre had secured a lottery grant of £10,000 plus additional funding of £8,000, and needed to raise a further £7,000 locally to be able to open the Malvern centre in the Salvation Army Hall by Christmas 2019. The application for £2,400 to the Town Council's special grant budget would support the setting up of the drop-in centre, by purchasing and installing office and laundry equipment.

"We opened our second day centre in Malvern in February 2020. Unfortunately, due to Covid we had to close from April to June 20, but people were given phone support during this time (Tuesday and Friday 8am – 1pm).

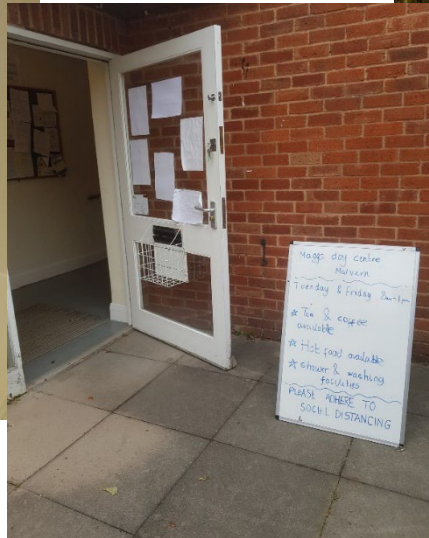
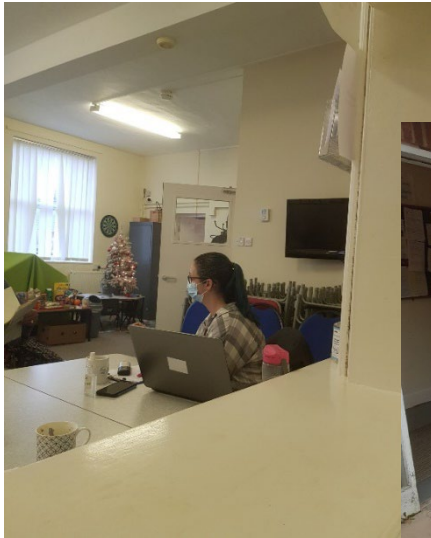
The Centre engages with people who are both homeless and vulnerable, i.e. they are isolated either geographically or physically from other people, and/or from services. Contrary to its picture postcard image, the result of both the increased presence of rough sleepers in Malvern and two deaths of rough sleepers triggered a discussion in the media and among service providers in the local area to assist both homeless and people at risk of homelessness in the Malvern area.

Evidence shows that rough sleepers and people at risk of homelessness will not travel the 9 miles from Malvern to Worcester where most services are based. The reasons for this reluctance are unclear, it may be due to the cost of transport, lack of confidence or to lack of knowledge of the services on offer in Worcester. Anecdotal evidence suggests that rough sleepers and those at risk prefer to remain in an area with which they are familiar. This reluctance was evidenced by the number of people in the county that refused to travel to the night shelters when the weather was below 0 degrees. The current lack of engagement is often compounded by complex issues such as substance abuse and/or poor mental and physical health.

- 35 different people have attended from January 21 to June 21, with an average of eight people attending each session.
- We have assisted 14 people to gain accommodation since we opened and are currently assisting others that are bidding currently.
- 143 food bank vouchers have been issued so far this year.
- Ten people have been referred for hot meals from Worcestershire Homeless Appeal Malvern (a hot meal service provided by volunteers that delivers a hot meal once a week.)
- We have reduced social isolation. 24 different people attended last year and to date 35 so far this year,
- We have helped two people to receive help with debt by referring them to Christians Against Poverty. We have also referred 7 people for help with fuel bills via Act on Energy.
- Five people are currently meeting the job coach here for support back into work.
- Fourteen people have also come in for help to use the internet this year and to register with online services /access their UC accounts etc.
- At least eight service users have also met Magg's Outreach Team and the Council Outreach worker here for more support as both drop in regularly.

- Five people with a recognised mental health condition have accessed the centre, as they know we are a safe space for them to come and interact.

Thanks to the grant from Malvern Town Council which provided a contribution to the entire running of Malvern Day Centre, we have been able to open the Day Centre and assist homeless and vulnerable people in Malvern.



DAME LAURA KNIGHT SOCIETY - £500 AWARDED MARCH 2020

BROOK FARM COMMUNITY ASSOCIATION - £2000 AWARDED IN APRIL 2020 TOWARDS COST OF RUNNING THE OCTAGON PROJECT



Report for Malvern Town Council

Grant received for £2000 received in May 2020.

We received £2000 from Malvern Town Council in May 2020 for our Covid-19 Response Project. The project was an emergency food project supported by 20 volunteers where we distributed over 350 food parcels to over 1300 individuals between March and September 2020. These were a lifeline to many of our clients who were either too vulnerable to get to the shops, or more often didn't have the money to buy food and other essentials.

As things were getting back to 'normal' over the summer we realised that the food poverty that people were experiencing wasn't temporary. We wanted to start a project that helped people who are experiencing food poverty while reducing the stigma around it. In September 2020 we launched Our Community Pantry, a sustainable, stigma-free, surplus food project. We receive food from Fareshare on an annual subscription basis, we ask clients for a £2 donation towards this cost, although this is strictly not monitored. Our clients receive a bag or two of food, some of which is pre-selected, but there is plenty of choice and the items they receive weekly are generally worth a minimum of £15 compared to retail value. At present we are seeing around 35 people each week at our Friday Pantry session and we open the pantry clients of the other projects we run whenever possible. This project is not simply about giving people access to more affordable food, it is about giving people access to different ways of preparing, cooking, and storing food. We are really keen to move from a reactive to proactive ways of supporting our community.

We are grateful to Malvern Town Council for their support during this time.

Sarah McCarten-Williams
Development Worker

COMMUNITY ACTION MALVERN AND DISTRICT £10,000

AGE UK MALVERN AND DISTRICT £10,000

MALVERN LINK AND COWLEIGH PCC AWARDED £2,500 IN JUNE 2020

The Parish of Malvern Link with Cowleigh received a grant from Malvern Town Council in June 2020 of £2,500. This was to part-fund a project called "Local Places, Local Faces" which aimed to provide a weekly tv show for members of the local community who were unable to access digital media.

We recognised that whilst there were a lot of groups providing resources online and significant support and information on social media, for the members of our community who don't have digital access the Pandemic meant that they were completely cut off from their normal sources of information and support.

Each episode of the show had the following elements:

1. An interview with a local person – we interviewed a number of local councillors, business owners, community activists. In the end 22 people were interviewed (mostly on Zoom, but we managed to do two on location).
2. Information about a local shop or group who were providing support and services. We pointed quite a few people to Age UK who we work closely with.
3. Some pieces of art – either photos or videos of the Malvern Hills or even sometimes footage of different parts of Malvern. We also had some artwork from the local schools (primarily Northleigh and St Matthias) and also some performances from local performers.

Key Outputs:

The project delivered the following:

- 14 episodes were made in total following the award of the grant
- 22 different people were interviewed
- 16 different shops/businesses were featured
- DVDs, VHS and Audio Cassette tapes were delivered to residents in Malvern Link, Cowleigh Bank, Great Malvern, Poolbrook and Pickersleigh.
- A total of 423 DVDs, VHS and Audio Cassette tapes were delivered over the project.

The funding allocated went towards the purchase of a Video Camera, portable lighting equipment and a DVD replicator. As we had some residents who didn't have a DVD player we purchased a system that allowed us to transfer material to a VHS tape. We then also had a resident who didn't have either of those machines but did have a cassette player. We managed to source cassette tapes and get some software that allowed us to transfer the audio and so we delivered that as well!

The total project including the equipment, volunteer costs, consumables and staff time cost just over £4,300. The funding from Malvern Town Council was instrumental in allowing this project to take place. Since the end of the project in early October 2020 we have used the equipment for a youth video project and hope to be doing further work in 2022.

“The Local Places, Local Faces project was a lifeline for me in lockdown. Without it, I would have had no idea what was happening around here. I was overjoyed to see familiar sights and sounds. I cannot thank you enough” – Mavis, 86 year old resident of Malvern Link

ARCOS £3,500